



HAM

Bone-In \$3.49 lb 18-22 lbs

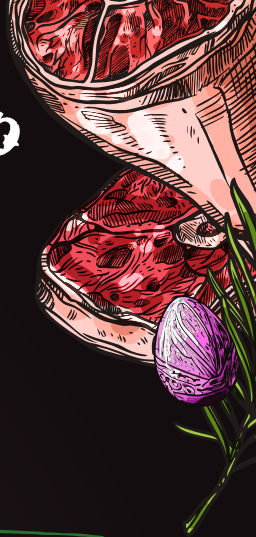
Boneless \$4.49 lb Whole 10 lb or 14 lb

Our traditional Holiday Ham is fully cooked...

Comes bone-in or boneless and is tender, juicy, and full of farm-fresh flavor.



The Butcher Shop



PRIME RIB ROASTS



*Bone-In Prime Rib (Choice) \$19.99 lb

*Bone-In Prime Rib (Prime Grade) \$24.99 lb

*Sold by the rib (weights are estimates)

2 rib= 5-7 lbs

3 rib= 8-10 lbs

4 rib=10-12 lbs

5 rib= 12-14 lbs

6 rib=15-17 lbs

7 rib= 16-18 lbs(whole)



Our hand-trimmed, hand-tied prime rib roasts are a cut above and deliver that truly special holiday experience.



SPECIALTY MEATS

Leg Of Lamb Bone-In \$12.99 lb

Leg of Lamb Bonless \$13.99 lb

Rack of Lamb \$31.99 lb

Pork Crown Roast \$9.99 lb
(Approx 20 ribs and 12 lbs)



Lamb: local pasture-raised lamb

PORCHETTA

Porchetta \$9.99 lb



Porchetta is a wonderful boneless pork roast wrapped in fat and skin and generously seasoned with garlic, sage, rosemary, and other aromatic herbs and spices. If you've ever tasted it, your mouth probably started watering as soon as you read the word on this menu.

